

NO

NUMERUM FOUND

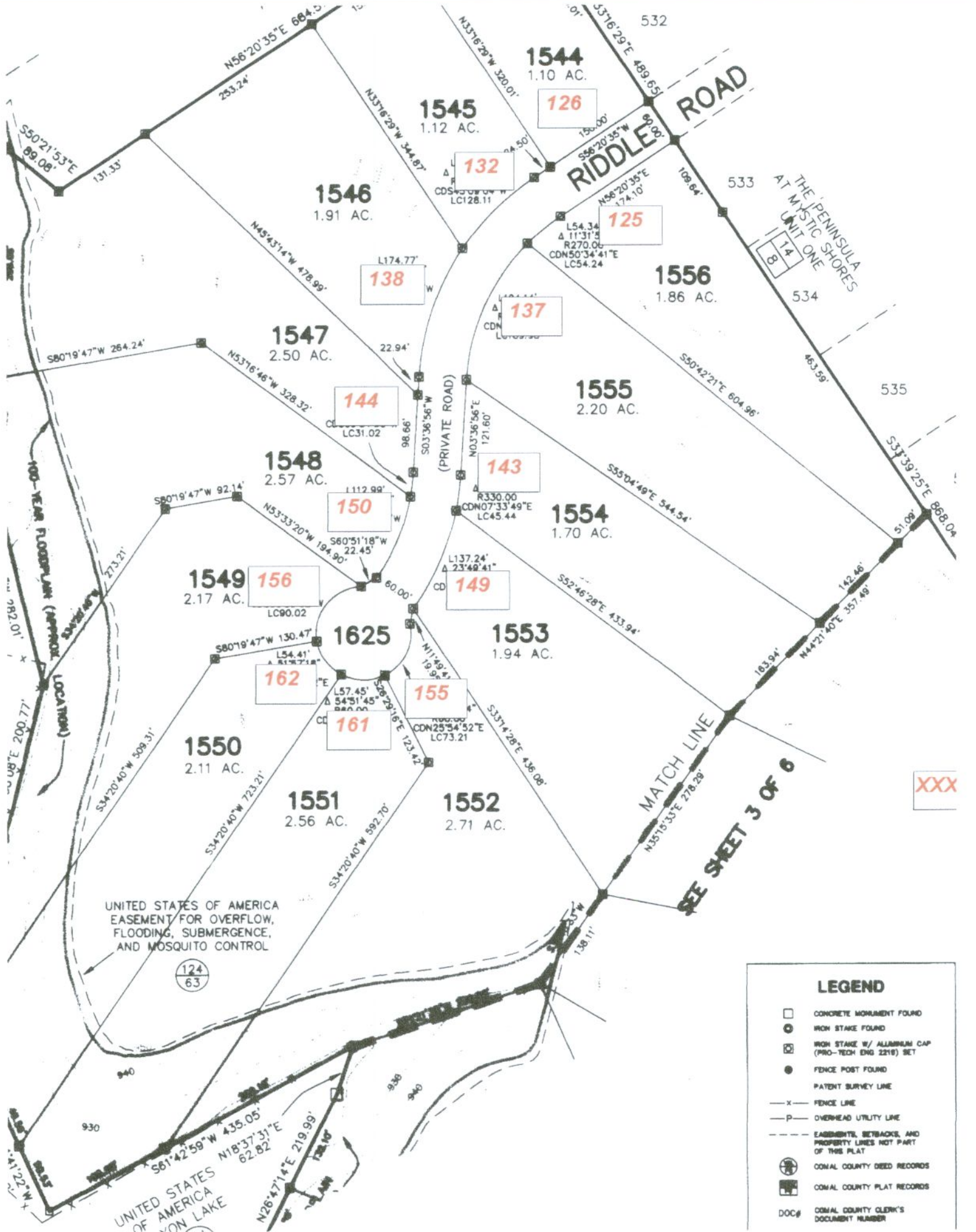
QUINO

1/4" ALUMINUM CAP
NO 2219) SET

OUND

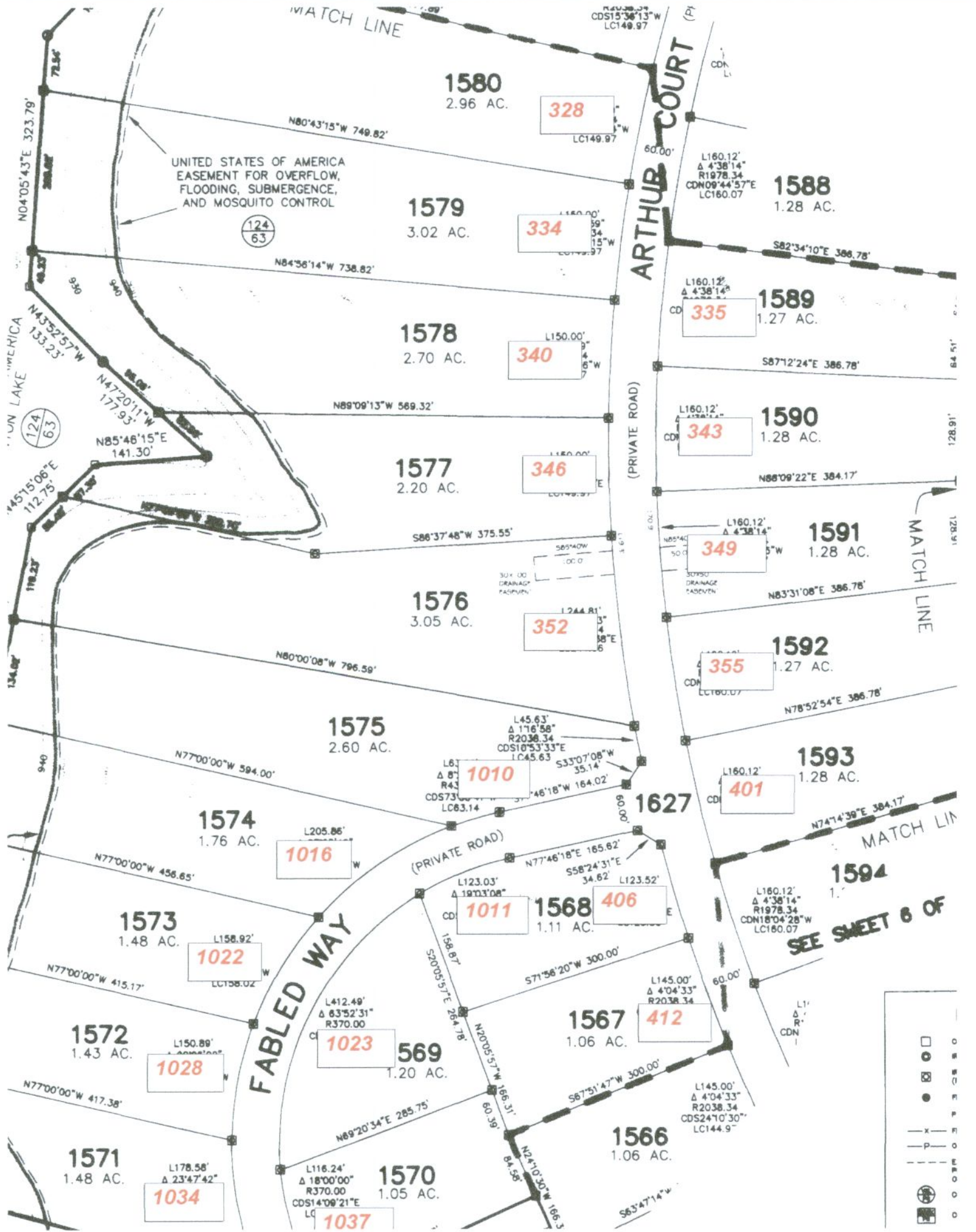
Y LINE

LITY LINE



XXX

SEE SHEET 3 OF 6



UNITED STATES OF AMERICA
EASEMENT FOR OVERFLOW,
FLOODING, SUBMERGENCE,
AND MOSQUITO CONTROL

UNITED STATES OF AMERICA
EASEMENT FOR OVERFLOW,
FLOODING, SUBMERGENCE,
AND MOSQUITO CONTROL

SEE SHEET 6 OF

- O
- B
- ⊗ C
- ⊠ F
- ⊞ P
- R
- - - O
- - - E
- - - P
- ⊕ O
- ⊞ O

1580
2.96 AC.

1579
3.02 AC.

1578
2.70 AC.

1577
2.20 AC.

1576
3.05 AC.

1575
2.60 AC.

1574
1.76 AC.

1573
1.48 AC.

1572
1.43 AC.

1571
1.48 AC.

1588
1.28 AC.

1589
1.27 AC.

1590
1.28 AC.

1591
1.28 AC.

1592
1.27 AC.

1593
1.28 AC.

1594
1.27 AC.

1627

328

334

340

346

352

1010

1011

1016

1022

1028

1034

1037

406

412

335

343

349

355

401

124
63

124
63

73.56'

930

940

930

940

940

940

940

940

940

940

940

940

940

940

940

940

940

940

940

940

940

940

CDS15°36'13"W
LC149.97

L160.12'
Δ 4°38'14"
R1978.34
CDN09°44'57"E
LC160.07

L160.12'
Δ 4°38'14"
R1978.34
CDN09°44'57"E
LC160.07

L160.12'
Δ 4°38'14"
R1978.34
CDN09°44'57"E
LC160.07

L160.12'
Δ 4°38'14"
R1978.34
CDN09°44'57"E
LC160.07

L160.12'
Δ 4°38'14"
R1978.34
CDN09°44'57"E
LC160.07

L160.12'
Δ 4°38'14"
R1978.34
CDN09°44'57"E
LC160.07

L160.12'
Δ 4°38'14"
R1978.34
CDN18°04'28"W
LC160.07

L145.00'
Δ 4°04'33"
R2038.34
CDS24°10'30"
LC144.97

L145.00'
Δ 4°04'33"
R2038.34
CDS24°10'30"
LC144.97

MATCH LINE

ARTHUR COURT

FABLED WAY

(PRIVATE ROAD)

(PRIVATE ROAD)

MATCH LINE

MATCH LINE

UNITED STATES OF AMERICA

UNITED STATES OF AMERICA

UNITED STATES OF AMERICA

UNITED STATES OF AMERICA

UNITED STATES OF AMERICA

UNITED STATES OF AMERICA

UNITED STATES OF AMERICA

UNITED STATES OF AMERICA

N80°43'15"W 749.82'

N84°36'14"W 738.82'

N89°09'13"W 569.32'

S86°37'48"W 375.55'

N80°00'08"W 796.59'

N77°00'00"W 594.00'

N77°00'00"W 456.65'

N77°00'00"W 415.17'

N77°00'00"W 417.38'

L412.49'
Δ 83°52'31"
R370.00

L116.24'
Δ 18°00'00"
R370.00
CDS14°09'21"E
LC144.97

L45.63'
Δ 176°58"
R2038.34
CDS18°53'33"E
LC45.63

L123.03'
Δ 19°13'08"
R2038.34
CDS73°14'00"E
LC63.14

L533°07'08"W
35.14'
S53°07'08"W
164.02'

L123.03'
Δ 19°13'08"
R2038.34
CDS73°14'00"E
LC63.14

L558°24'31"E
34.82'
S58°24'31"E
165.82'

L571°56'20"W
300.00'

L567°51'47"W
300.00'

L563°47'14"W

S82°34'10"E 386.78'

S87°12'24"E 386.78'

N88°09'22"E 384.17'

N83°31'08"E 386.78'

N78°52'54"E 386.78'

N74°14'30"E 384.17'

30'x100'
DRAINAGE
EASEMENT

30'x100'
DRAINAGE
EASEMENT

L6.1'
Δ 8°
R43'
CDS73°14'00"E
LC63.14

L123.03'
Δ 19°13'08"
R2038.34
CDS73°14'00"E
LC63.14

L120°05'57"W
166.31'

N24°10'30"W
166.5'

L160.12'
Δ 4°38'14"
R1978.34
CDN09°44'57"E
LC160.07

L160.12'
Δ 4°38'14"
R1978.34
CDN09°44'57"E
LC160.07

L160.12'
Δ 4°38'14"
R1978.34
CDN09°44'57"E
LC160.07

L160.12'
Δ 4°38'14"
R1978.34
CDN09°44'57"E
LC160.07

L160.12'
Δ 4°38'14"
R1978.34
CDN09°44'57"E
LC160.07

L160.12'
Δ 4°38'14"
R1978.34
CDN09°44'57"E
LC160.07

L160.12'
Δ 4°38'14"
R1978.34
CDN18°04'28"W
LC160.07

L145.00'
Δ 4°04'33"
R2038.34
CDS24°10'30"
LC144.97

L145.00'
Δ 4°04'33"
R2038.34
CDS24°10'30"
LC144.97

L145.00'
Δ 4°04'33"
R2038.34
CDS24°10'30"
LC144.97

CDS15°36'13"W
LC149.97

L160.12'
Δ 4°38'14"
R1978.34
CDN09°44'57"E
LC160.07

L160.12'
Δ 4°38'14"
R1978.34
CDN09°44'57"E
LC160.07

L160.12'
Δ 4°38'14"
R1978.34
CDN09°44'57"E
LC160.07

L160.12'
Δ 4°38'14"
R1978.34
CDN09°44'57"E
LC160.07

L160.12'
Δ 4°38'14"
R1978.34
CDN09°44'57"E
LC160.07

L160.12'
Δ 4°38'14"
R1978.34
CDN09°44'57"E
LC160.07

L160.12'
Δ 4°38'14"
R1978.34
CDN18°04'28"W
LC160.07

L145.00'
Δ 4°04'33"
R2038.34
CDS24°10'30"
LC144.97

L145.00'
Δ 4°04'33"
R2038.34
CDS24°10'30"
LC144.97

L145.00'
Δ 4°04'33"
R2038.34
CDS24°10'30"
LC144.97

MATCH LINE

ARTHUR COURT

FABLED WAY

(PRIVATE ROAD)

(PRIVATE ROAD)

MATCH LINE

MATCH LINE

UNITED STATES OF AMERICA

UNITED STATES OF AMERICA

UNITED STATES OF AMERICA

UNITED STATES OF AMERICA

UNITED STATES OF AMERICA

UNITED STATES OF AMERICA

UNITED STATES OF AMERICA

UNITED STATES OF AMERICA

N80°43'15"W 749.82'

N84°36'14"W 738.82'

N89°09'13"W 569.32'

S86°37'48"W 375.55'

N80°00'08"W 796.59'

N77°00'00"W 594.00'

N77°00'00"W 456.65'

N77°00'00"W 415.17'

N77°00'00"W 417.38'

L412.49'
Δ 83°52'31"
R370.00

L116.24'
Δ 18°00'00"
R370.00
CDS14°09'21"E
LC144.97

L45.63'
Δ 176°58"
R2038.34
CDS18°53'33"E
LC45.63

L123.03'
Δ 19°13'08"
R2038.34
CDS73°14'00"E
LC63.14

L533°07'08"W
35.14'
S53°07'08"W
164.02'

L123.03'
Δ 19°13'08"
R2038.34
CDS73°14'00"E
LC63.14

L558°24'31"E
34.82'
S58°24'31"E
165.82'

L571°56'20"W
300.00'

L567°51'47"W
300.00'

L563°47'14"W

S82°34'10"E 386.78'

S87°12'24"E 386.78'

N88°09'22"E 384.17'

N83°31'08"E 386.78'

N78°52'54"E 386.78'

N74°14'30"E 384.17'

30'x100'
DRAINAGE
EASEMENT

30'x100'
DRAINAGE
EASEMENT

L6.1'
Δ 8°
R43'
CDS73°14'00"E
LC63.14

L123.03'
Δ 19°13'08"
R2038.34
CDS73°14'00"E
LC63.14

L120°05'57"W
166.31'

N24°10'30"W
166.5'

L160.12'
Δ 4°38'14"
R1978.34
CDN09°44'57"E
LC160.07

L160.12'
Δ 4°38'14"
R1978.34
CDN09°44'57"E
LC160.07

L160.12'
Δ 4°38'14"
R1978.34
CDN09°44'57"E
LC160.07

L160.12'
Δ 4°38'14"
R1978.34
CDN09°44'57"E
LC160.07

L160.12'
Δ 4°38'14"
R1978.34
CDN09°44'57"E
LC160.07

L160.12'
Δ 4°38'14"
R1978.34
CDN09°44'57"E
LC160.07

L160.12'
Δ 4°38'14"
R1978.34
CDN18°04'28"W
LC160.07

L145.00'
Δ 4°04'33"
R2038.34
CDS24°10'30"
LC144.97

L145.00'
Δ 4°04'33"
R2038.34
CDS24°10'30"
LC144.97

L145.00'
Δ 4°04'33"
R2038.34
CDS24°10'30"
LC144.97

CDS15°36'13"W
LC149.97

L160.12'
Δ 4°38'14"
R1978.34
CDN09°44'57"E
LC160.07

L160.12'
Δ 4°38'14"
R1978.34
CDN09°44'57"E
LC160.07

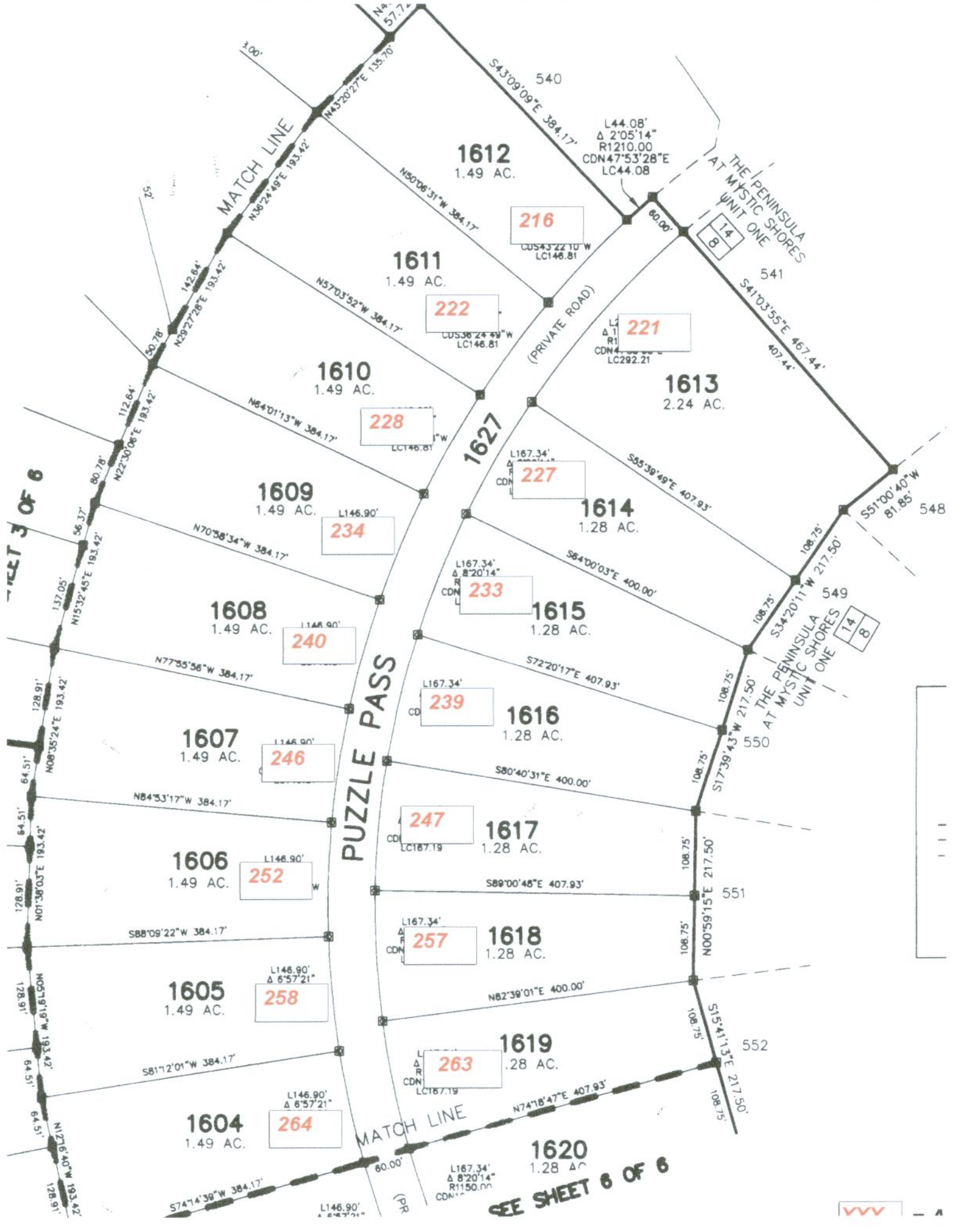
L160.12'
Δ 4°38'14"
R1978.34
CDN09°44'57"E
LC160.07

L160.12'
Δ 4°38'14"
R1978.34
CDN09°44'57"E
LC160.07

L160.12'
Δ 4°38'14"
R1978.34
CDN09°44'57"E
LC160.07

L160.12'
Δ 4°38'14"
R1978.34
CDN09°44'57"E
LC160.07

L160.12'
Δ 4°38'14"
R1978.34
CDN18°04'28"W
LC1



SHEET 3 OF 6

SEE SHEET 6 OF 6

THE PENINSULA AT MYSTIC SHORES UNIT ONE

THE PENINSULA AT MYSTIC SHORES UNIT ONE